

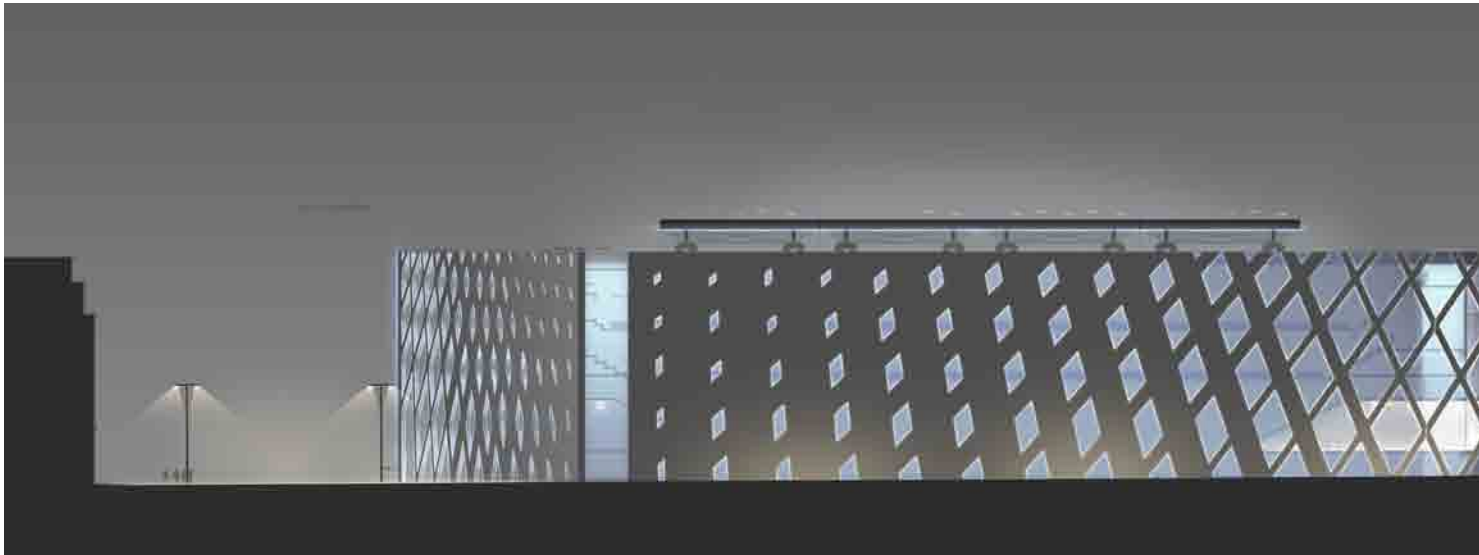


new urban stadium at roland garros

In the context of the competition for the new stadium at Roland Garros, we designed both the interior and exterior architectural lighting of the building as well as its circulation areas and functional spaces. We also designed the sport lighting, which is extremely complex and implies technical constraints, because of television broadcast requirements. Ranking: second out of four competitors, above Portzamparc and Rogers.

new stadium at roland garros, Paris

contracting authority :	fédération française tennis
architect :	paul andreu & dubus richez
lighting design :	les éclaireurs
budget :	116 M euros excl. taxes
project size :	42 200 sqm
competition :	2009
completion :	not selected



The highlighting of the façades' mesh creates a changing view, which reinforces their opening and closing, according to the point of view on the building. The central patio creates appears as a beckoning and breathing space between the two parts of the stadium. The interior lighting enables television shooting at a broadcast level.

